

Product Datasheet



TYT7-Hybrid Series

3.3V to 12V
1A to 100mA

EU

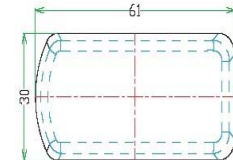
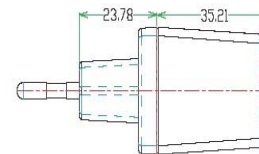
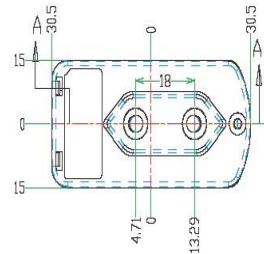
Switching Power Supply

INPUT	VOLTAGE / FREQ.	100~240Vac/50/60Hz ±3Hz
	RATED INPUT CURRENT	0.2A max.
	INPUT POWER	8W max.
	POWER CONSUMPTION (no load)	0.30W max.
	INRUSH CURRENT (Typ.)cold Start	25A/230Vac
	CONFIGURATION	EN50075 (BS/NE/AS/NZ optional)
OUTPUT	DC VOLTAGE	3.3V - 12V
	RATED CURRENT (max OUTPUT)	1000mA - 100mA
	CONSTANT CURRENT	YES
	CONSTANT VOLTAGE	YES
	LEAKAGE CURRENT	50µA max.
	RATED OUTPUT POWER	0.9W - 6W max.
	LINE REGULATION (in % of V_{in})	±5% of rated output voltage
	RIPPLE AND NOISE <small>Note 1</small>	400mVp-p max.
	AVERAGE EFFICIENCY	EuP2011 all rated outputs
	TURN ON DELAY TIME	2000mS at nominal input
	RISE TIME	≤ 20mS
	HOLD UP TIME	8mS min.
	DC CORD AND PLUG	On request
PROTECTION	OVER VOLTAGE PROTECTION	No
	SHORT CIRCUIT PROTECTION	Hiccup Mode; Autorecovery
	OVER CURRENT PROTECTION	Max. 150% of rated output current
ENVIRONMENT	TEMPERATURE (working/storage)	0°C ~ +40°C / -20°C ~ +80°C
		EuP 2011 compliant
		PAH/6P/NP/REACH compliant
		ENERGY STAR Level V
SAFETY &	EN60950-1, EN 60065, EN60335-1	
EMC	EN55014, EN55022, EN55024, EN61000-3-2/3	
MTBF	50K hours min. MIL-HDBK-217F (25°C)	
OTHERS	DIMENSION	61mm*30*59mm (L*W*H)
	NET WEIGHT	72grs
	PACKING	100pcs/9Kgs/0.038CBM

Sample shows EU plug EN 55075

TYPICAL APPLICATIONS:

- BATTERY CHARGER
- AUDIO EQUIPMENT
- PDA
- DVD PLAYER



Dimension are advisory only. Appearance may vary. This datasheet is covering a complete product family. Ratings shown are reflecting smallest and largest values only. For detailed ratings, please request an individual datasheet for the power supply you require. Alteration reserved without prior notice.

